



# Bobcat

*One Tough Animal*

AGRICULTURAL RANGE

# TELEHANDLERS

R-Series

🌐 MEA & CIS



## INTRODUCTION

# ONE TOUGH ANIMAL

## ► OUR MISSION

We empower operators to accomplish more, while working in the toughest conditions and tightest situations. When our customers have the will, we provide the way.



## ► BOBCAT'S HISTORY

In 1958, the Melroe Manufacturing Company introduced a compact front-end loader that quickly evolved into the M400, the world's first true skid-steer loader. The company soon adopted what became the world famous 'Bobcat' brand — and its success paved the way for the global compact equipment industry we see today.

## ► CENTER OF EXCELLENCE IN PONTCHÂTEAU, FRANCE

In Pontchateau, France, Bobcat's Center of Excellence is dedicated to producing telescopic loaders to the highest standards. Through rigorous development, testing, and manufacturing, Bobcat guarantees that each machine surpasses customer expectations. This commitment to excellence is reflected in a standard 3-year warranty, instilling confidence in every investment.



## ► BOBCAT TODAY

With over 60 years of manufacturing experience and a commitment to ongoing innovation, Bobcat has delivered millions of machines to the market. Known for their high performance, reliability, and unparalleled comfort, the diverse lineup caters to various applications. Whether it's landscaping, snow removal, construction, demolition, or roadwork, Bobcat machines empower users to accomplish more.





# PRODUCTIVITY MEETS SUPERIOR COMFORT

## MEET YOUR NEW WORKMATE

Treat yourself to a superior machine that combines all-day comfort, enhanced productivity, dependability, intelligent features, and a robust build with intuitive operation and excellent overall ergonomics.



Smart boom functions\*:  
• Automatic suspension  
• Floating mode  
• Automated movements  
• Adjustable speeds  
• Lifting height limit

Class-leading crowding force of up to 7 tonnes

Self-cleaning cooling system with an automatic reverse fan

Stage IIIA PERKINS engine with up to 96 kW (129 hp) and 516 Nm of torque (at 1 400 rpm)

Quick and easy window cleaning, mirror de-icing, and windshield demisting  
**P.9**

4 steering modes\*: 2-wheel steer, 4-wheel steer, crab steer, and semi-crab steer

Oil immersed axles with limited slip differential

\*according to AGRI pack version



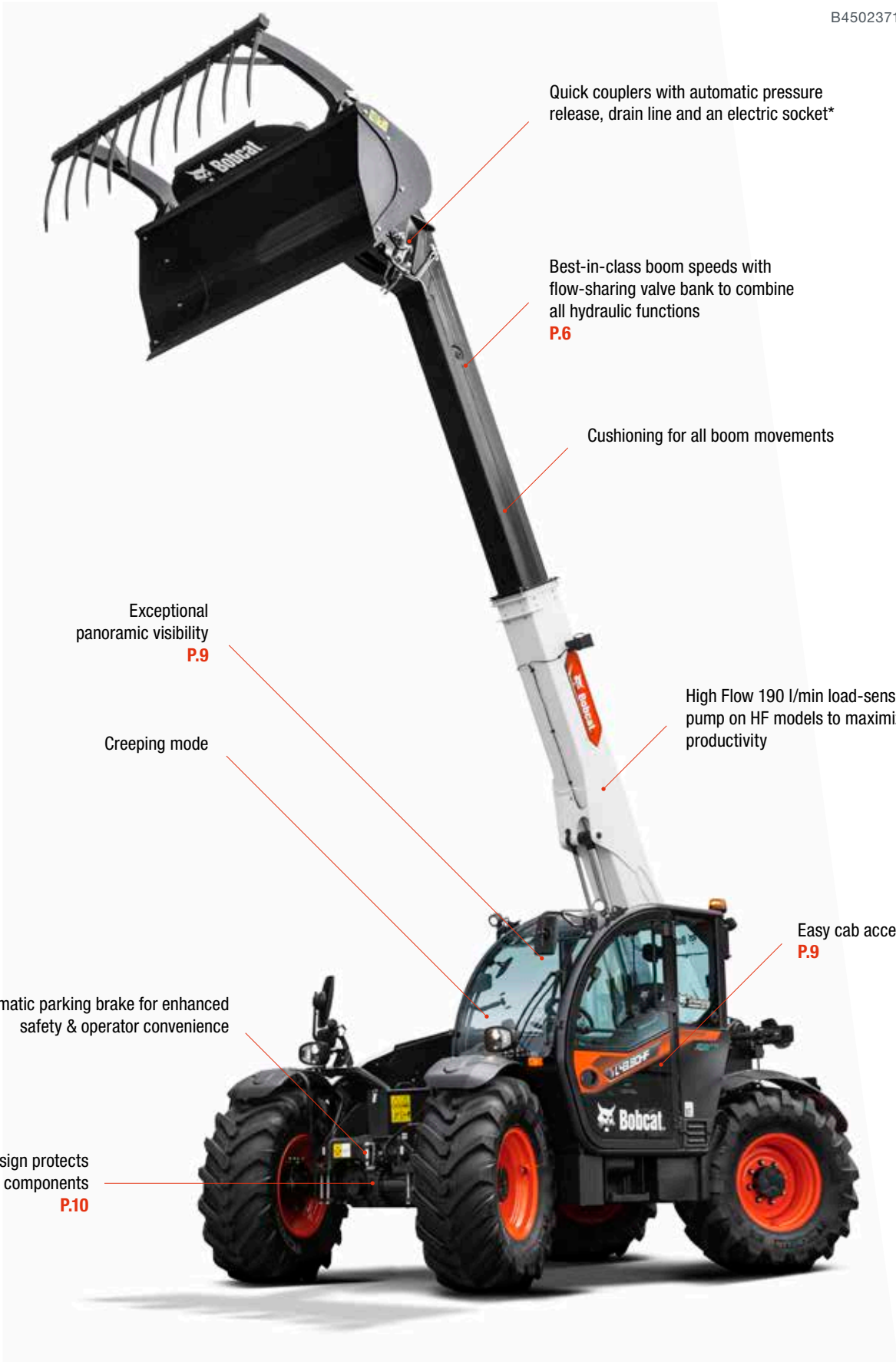
## EFFICIENCY AND PRODUCTIVITY

Benefit from best-in-class boom speeds, a range of smart features for increased efficiency, and the ability to handle heavy loads at height safely and easily.  
**P.6**



## INTELLIGENT FUNCTIONS

Maximize the potential of our telehandlers with automated boom functions and enhanced control over machine speed.  
**P.7**



Quick couplers with automatic pressure release, drain line and an electric socket\*

Best-in-class boom speeds with flow-sharing valve bank to combine all hydraulic functions  
**P.6**

Cushioning for all boom movements

Exceptional panoramic visibility  
**P.9**

Creeping mode

High Flow 190 l/min load-sensing pump on HF models to maximize productivity

Automatic parking brake for enhanced safety & operator convenience

Shielded design protects all components  
**P.10**

Easy cab access  
**P.9**



## PREMIUM WORKSPACE

Enjoy elevated comfort with the spacious and intelligently designed cab layout. With excellent all-around visibility and intuitive, easy-to-reach controls, you'll remain comfortable no matter the task at hand.  
**P.9**



## MAXIMUM UPTIME

Achieve more while minimizing downtime with our rigorously tested machines, featuring a signature frame design and a shielded bottom plate to protect all vital components.  
**P.10**



# DESIGNED FOR FARMING



# SMARTER AND FASTER



## ► INCREASED EFFICIENCY AND PRODUCTIVITY

Benefitting from best-in-class boom speeds, a powerful transmission, and automated boom movements, operators can complete their work more quickly and efficiently.

## ► CONFIDENCE-INSPIRING STABILITY

Effortlessly and safely handle heavy loads at any height, thanks to the well-balanced construction, low center of gravity, heavy counterweight, and long wheelbase.



## ► AUTOMATED BOOM FUNCTIONS

### Bucket shaking

The bucket shaking functionality is controlled by the joystick position:

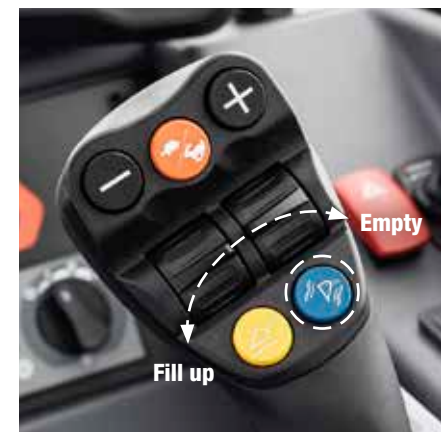
- In NEUTRAL: shaking gradually empties the bucket.
- In the LEFT position: crowding optimizes material distribution within the bucket.
- In the RIGHT position: dumping effectively removes sticky materials from the bucket.

### Max Lift Angle

Prevent collisions in low-ceiling buildings by setting the maximum boom angle.

### Return to Ground

Set the angle of the retracted boom. As the boom lowers, it self-retracts and stops at the designated position, preventing damage to the attachment or ground.





# FIRST-CLASS USER EXPERIENCE

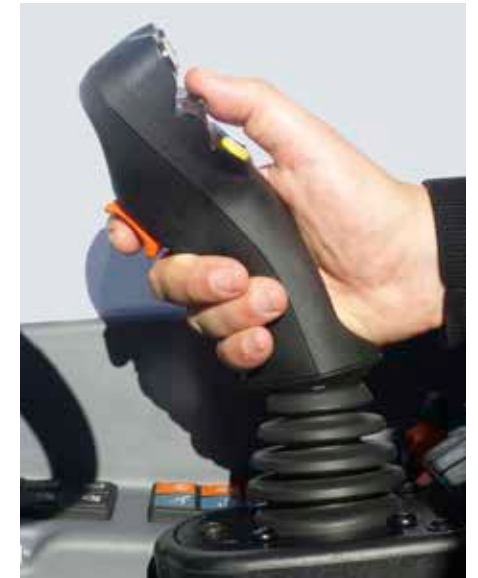


This image shows the interior of Large models.



## ► 360° VISIBILITY

Experience a panoramic view of the job site from our fully glazed cab, featuring a thin roof grid, sloped hood, and low dashboard. Up to 8 LED work lights maintain their last configuration, while the electric mirror includes a de-icing function for improved visibility.



## ► ALL-IN-ONE SMART JOYSTICK

Mounted on the seat's armrest (available on Large models), this control panel manages the boom, machine speed, and direction. It also facilitates bucket shaking, and attachment floating.



## ► INTUITIVE & SMOOTH OPERATION

Controls are easy to reach and feature an intuitive layout and consistent color-coded design for quick identification. Each control element is backlit to ensure visibility in low-light conditions.

## ► INTERACTIVE DISPLAY

Information is shown on a user-friendly 5-inch display. Plus, for added safety and ease of maneuvering, the rear camera feed automatically appears on the cab display when in reverse.



## ► QUICK CLEANING FUNCTION

Easily clean all windows within seconds by activating the wipers and washers with just one button.



## ► EASY CAB ACCESS

Getting in and out of the new cab is incredibly convenient, thanks to a wide door opening, a single notched step, numerous handles, and unobstructed access to the new Grammer Maximo air-suspension seat.



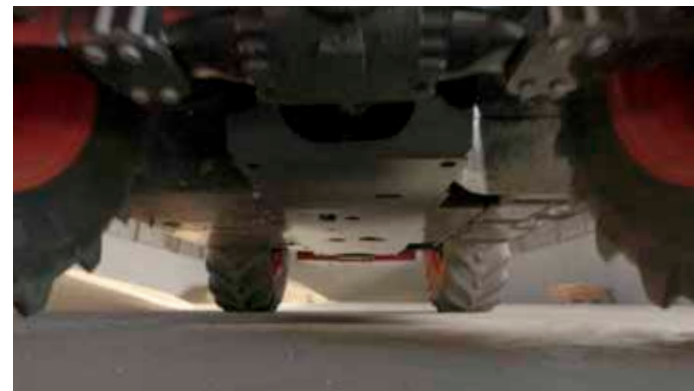
# BUILT TO LAST

## ► EVERYDAY TOUGHNESS

A robust boom, Bobcat loader's signature box-welded frame design, and a shielded bottom plate to protect all vital components mean that you can count on your machine day in and day out.

## ► RIGOROUS QUALITY INSPECTION

Each machine undergoes rigorous and extensive testing, including regulatory checks, performance compliance, quality inspections, and assessment of all machine functionalities.



Shielded bottom plate



Automatic reverse fan

## 3 YEAR WARRANTY

## ► STANDARD 3-YEAR MANUFACTURER WARRANTY

Bobcat Company develops every machine to the highest standards of quality and durability. That's why our standard warranty provides 36 months or 3 000 operating hours (whichever occurs first) of coverage.



## ► PROTECTION PLUS EXTENDED WARRANTY

Enjoy total peace of mind with a Protection Plus extended warranty. Providing the same level of protection as the standard warranty, Protection Plus also caters to different customer needs and expectations by offering a choice of durations and annual operating hours. According to your requirements, you can benefit from coverage for up to 5 years or 6 000 engine hours. Protection Plus is also transferable, likely increasing your machine's resale value.

**THERE'S NO TIME FOR DOWNTIME. STAND UP TO THE HARSHTEST CONDITIONS, DAY AFTER DAY.**



## ► BOBCARE

Ensuring your machine's longevity begins with planned maintenance, which helps reduce repair costs and prevent unexpected failures during critical operations.

- Minimize risks by avoiding major repairs and complete failures.
- Boost productivity and profitability by minimizing downtime.



Full & easy access to engine compartment



# CHOOSE YOUR ANIMAL

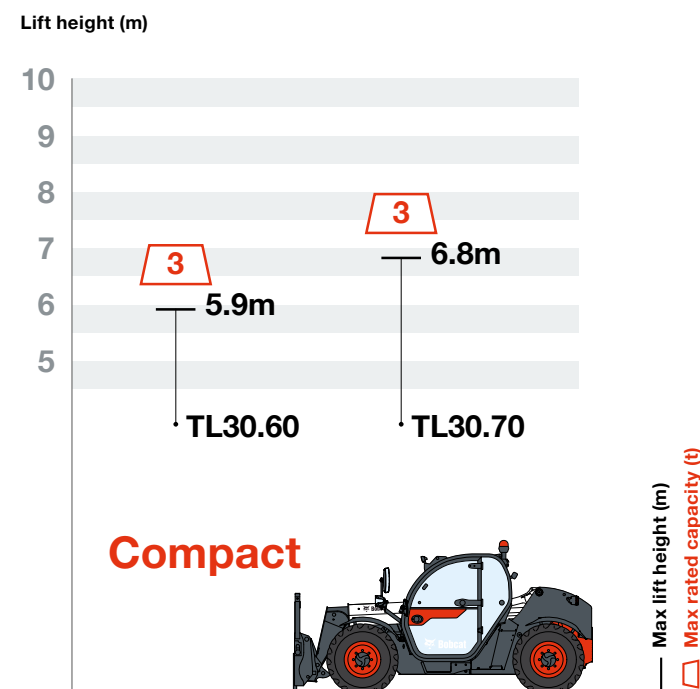
## COMPACT



### ► POWERFUL YET COMPACT:

The ideal combination of compact dimensions and performance.

- Narrow frame of 2.1 m
- Lifting performance up to 3 tons and 6.8 m
- Overall machine height can range from 2 140 mm to 2 375 mm by combining a Low/High mounted cab with 20"/24" tires



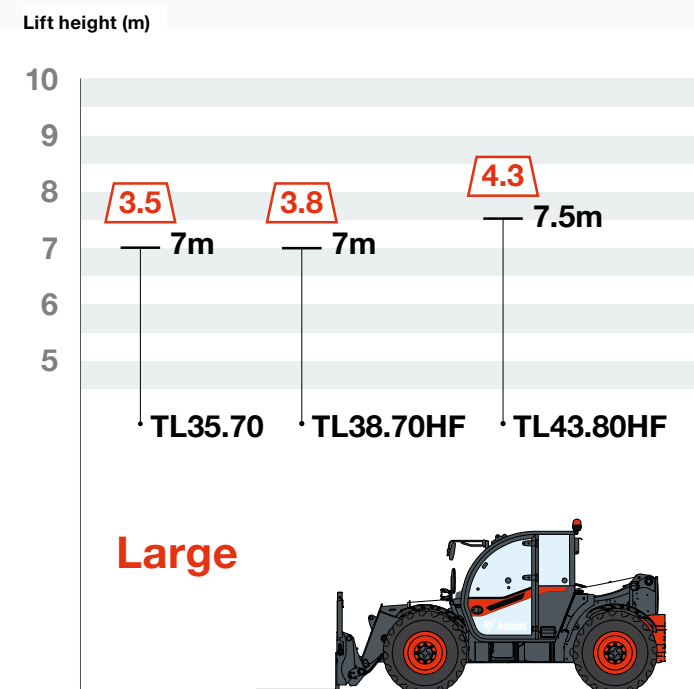
## LARGE



### ► PRODUCTIVITY BEASTS

Designed for heavy-duty jobs without compromising on efficiency.

- 190 l/min High Flow technology
- Lifting performance up to 4.3 tons and 7.5 m





AGRI PACKS

AGRI PACKS				
AGRI	★	★★	★★★	
PERFORMANCE				
C&L Quick-Tach tool carrier with manual attachment lock	✓	✓	✓	
C&L Quick-Tach tool carrier with hydraulic attachment lock	•	•	•	
C&L Front auxiliary hydraulic quick couplers with integrated pressure-release system	✓	✓	✓	
C&L Boom wiring harness and controls in cab	•	•	•	
C&L Auto boom suspension	•	•	✓	
C&L Boom float	•	•	•	
C&L Bucket shaking	•	•	✓	
C&L Inching function combined with brake pedal	✓	✓	✓	
C&L Creeping	✓	✓	✓	
C&L Auxiliary hydraulic flow adjustment	✓	✓	✓	
C&L Permanent hydraulic flow	✓	✓	✓	
C&L Boom speed adjustment (Smart handling system)	✓	✓	✓	
C&L Auto fan inverter with cycle time setting	✓	✓	✓	
C&L Cold start	✓	✓	✓	
C&L Cyclonic pre-filter	✓	✓	✓	
C&L Limited slip differential on front axle	✓	✓	✓	
C&L Boom cushion on boom retraction and boom lifting (min & max angles)	✓	✓	✓	
CAB				
C&L Mechanical suspension seat	✓	–	–	
C Air suspension seat	•	✓	✓	
L Air suspension seat	•	✓	–	
L Grammer air suspension seat with heating, left armrest, and right armrest with joystick	•	•	✓	
L Lunch box (heated and refrigerated if air conditioning-equipped)	•	•	•	
C&L Front and rear wipers with washer	✓	✓	✓	
C&L Roof window wiper with washer	•	✓	✓	
L Lateral window wiper with washer	•	✓	✓	
C&L Quick window cleaning	✓	✓	✓	
C&L Electric mirror with de-icing on right-hand side	•	•	•	
C&L Standard joystick with proportional controls and forward/reverse drive	✓	✓	–	
C&L Smart joystick with proportional controls, forward/reverse drive	•	•	✓	
C&L Forward/reverse drive lever on steering wheel	•	•	•	
C&L Standard 5" display with radio-ready & loudspeakers	✓	–	–	
C&L Standard 5" display with Bluetooth radio, microphone, & loudspeakers	•	✓	✓	
C&L USB plug (mobile charging)	✓	✓	✓	
C&L Rear video camera	•	•	•	
C&L Air conditioning	✓	✓	✓	
C Cab+ (phone holder, sun visor, foamed arm rest, telescopic & tilting steering column, PVC document holder)	•	✓	–	
C Cab+ AGRI (includes “Cab+” line, deluxe steering wheel, keychain, telescopic & tilting steering column, tractor 3-pin socket, 4 steering modes, work lights keypad, smart keypad with return-to-ground, and max lift angle)	•	•	✓	
L Cab+ (phone holder, sun visor, foamed arm rest, telescopic & tilting steering column, PVC document holder)	✓	–	–	
L Cab+ AGRI (includes “Cab+” line, deluxe steering wheel, keychain, telescopic & tilting steering column, tractor 3-pin socket, 4 steering modes, work lights keypad, smart keypad with return-to-ground, and max lift angle)	•	✓	✓	

AGRI PACKS				
AGRI	★	★★	★★★	
LIGHTS				
C&L 4 halogen work lights	✓	–	–	
C&L 6 halogen work lights	•	✓	–	
C&L 6 LED work lights	•	•	✓	
C&L Extra 2 LED work lights on the right mirror bracket	•	•	•	
C&L Halogen road lights & Beacon	✓	✓	✓	
C&L LED road pack (road lights + rotating beacon + reversing light)	•	•	•	
SAFETY				
C&L Aggravating Movement Arrester compliant with EN15000	✓	✓	✓	
C&L ROPS / FOPS level 2 cab with tinted glass	✓	✓	✓	
C&L Front tow hitch	✓	✓	✓	
C&L Automatic parking brake	✓	✓	✓	
C&L Back-up alarm	✓	✓	✓	
C&L Boom stop	✓	✓	✓	
C&L Fire extinguisher	•	•	•	
TIRES, TRAVEL & TOWING				
C Standard 405/70 20" tires	✓	–	–	
C Alliance 400/70 R20 A580 steel-belted radial tires	•	✓	✓	
C Alliance 405/70 R24 A580 steel-belted radial tires	•	•	•	
L Standard 400/80 24" tires	✓	–	–	
L Alliance 460/70 R24 A580 steel-belted radial tires	•	✓	✓	
C&L Support for registration plate	✓	✓	✓	
C&L Rear mirror on tow hitch	•	•	•	
C&L Rear auxiliary hydraulic line (double action)	•	•	•	
C&L 30 km/h speed (with 24" tires) (except TL43.80HF)	✓	–	–	
C&L 40 km/h speed (with 24" tires)	•	✓	✓	
C&L Rotating tow hitch (including rear electric socket)	✓	✓	✓	
C&L Rotating tow hitch with height adjustment and auto lock system (including rear electric socket)	•	•	•	
MISCELLANEOUS				
C&L Anti-theft ignition system	✓	✓	✓	
C&L Electronic Battery Disconnect (EBD)	✓	✓	✓	
C&L Dust protection on the boom	✓	✓	✓	
C&L Toolbox	•	•	•	
C&L Lockable fuel and AdBlue caps	•	•	•	
C&L Protective zinc coating	•	•	•	
C&L Protective grill for windshield (front and roof)	•	•	•	
C&L Wheel wedge	•	•	•	
C&L Custom color	•	•	•	
C&L Attachment tool carrier with specific design	•	•	•	

• = option  
✓ = standard  
– = not available

C = Compact models: TL30.60, TL30.70  
L = Large models: TL35.70, TL38.70HF, TL43.80HF

AGRI PACKS

Bobcat telescopic loaders are available in 3 AGRI finishing levels. If you want to add a specific functionality, choose from a list of comprehensive options and customize your telescopic loader to your heart’s content!



Side window wiper



Feather-touch shuttle lever (FNR)



Steel toolbox (20 l)



Adjustable sun visor



Dust protection



Extra LED work lights and electric mirror with de-icing



Boom suspension (Nitrogen accumulator)



Tractor socket (12 V,15 A)



Rear camera



Rear mirror



Built-in electric socket (2 lines)



Hydraulic attachment lock using a dedicated auxiliary line



LED road pack:  
• road lights  
• rotating beacon  
• reversing light



Double-acting rear hydraulic auxiliary outlets and hydraulic trailer brake



Standard 5" display with Bluetooth radio, microphone, & loudspeakers



Smart joystick with Boom float and bucket shaking



Experience the R-Series’ many improvements, including the new air-suspension seat, designed specifically for agricultural customers who require essential farming equipment.



Receive a substantial comfort upgrade with this package, aimed at machinery cooperatives and farmers seeking standard equipment levels.



This pack offers a significantly higher level of comfort and incorporates numerous innovative technical features, catering to farmers who rely on their machines for intensive daily use.



Grammer Maximo air-suspension seat with heating, Dynamic Dumping System (DDS), and a joystick mounted on the suspended armrest



# THE MULTI-TOOL CARRIER

TOP SELECTION OF ATTACHMENTS					
	TL30.60	TL30.70	TL35.70	TL38.70HF	TL43.80HF
1 Bale handler with tines	•	•	•	•	•
2 Bale handler with tubes	•	•	•	•	•
3 Bale spike	•	•	•	•	•
4 Bucket, grapple	•	•	•	•	•
5 Bucket, light material	•	•	•	•	•
6 Grapple, fork — agricultural	•	•	•	•	•
7 Jib, crane	•	•	•	•	•
8 Pallet forks, fixed	•	•	•	•	•
9 Pallet forks, floating	•	•	•	•	•
10 Sweeper	•	•	•	•	•

► **THE ABILITY TO DO MORE:**  
Enhance versatility and efficiency with Bobcat attachments.

- Match performance to your Bobcat machine.
- Work harder with stronger components and construction.
- Rest easy with a 12-month warranty on every genuine Bobcat attachment.

Actual attachment compatibility may vary based on different machine configurations. Contact your dealer for actual attachment compatibility.

• = available    – = not available



BOBCAT OFFERS MORE ATTACHMENTS FOR YOUR NEEDS. CHECK OUT 'BOBCAT ATTACHMENT CATALOG' FROM YOUR DEALER OR DOWNLOAD THE 'ONE TOUGH WORLD' APP VIA QR CODE.



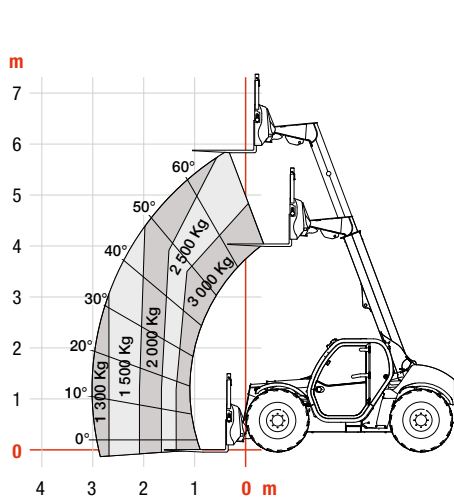
SPECIFICATIONS

SPECIFICATIONS						
		COMPACT MODELS		LARGE MODELS		
PERFORMANCE	Unit	TL30.60	TL30.70	TL35.70	TL38.70HF	TL43.80HF
Maximum lift capacity	kg	3 000		3 500	3 800	4 300
Maximum lift height (24" tires)	m	5.9	6.8	7		7.5
Maximum forward reach (24" tires)	m	3		3.9		4
Crowding force	kg	4 600		6 200		7 000
MASS						
Machine mass (unladen & standard tires)	kg	5 020	5 320	7 020	7 285	7 855
Max towable mass with trailer braking system	kg	16 100 (with country certification)		19 000 (with country certification)		
ENGINE						
Make / model / emission stage		PERKINS / 1104D-44TA/ stage IIIA			PERKINS / 1104D-E44TA / stage IIIA	
Number of cylinders / displacement	l	4 cylinders / 4.4				
Rated power (ISO 14396)	kW (hp)	74 (99)			96 (129)	
Maximum Torque at 1 400 rpm	Nm	410			516	
DIMENSIONS						
Standard tires	mm	405 / 70 (20" tires)		400 / 80 (24" tires)		
Overall width	mm	2 100		2 300		
Overall length to forks face	mm	4 507	5 056	4 869		4 975
Overall height* with low mounted cab	mm	2 140 (20" tires) / 2 225 (24" tires)		2 373 (20" tires) / 2 457 (24" tires)		2 457
Overall height* with high mounted cab	mm	2 290 (20" tires) / 2 375 (24" tires)		–		
Ground clearance with 24" tires	mm	348		430		
Wheelbase	mm	2 820		2 870		
External turning radius (with standard tires)	mm	3 717		3 714		
DRIVE SYSTEM						
Transmission		Continuous variable hydrostatic transmission with electronic regulation & 4-wheel drive				
Main drive		Hydrostatic motor		Hydrostatic motor + 2-speed gearbox		
Number of speeds (forward and backward)		2		4		
Max speed High range with 24" tires	km/h	up to 40				
Steering modes		4 steering modes with automatic wheel re-alignment 2-wheel steering / 4-wheel steering / crab-steer / semi-crab steer (optional)				
HYDRAULIC SYSTEM						
Pump type		Gear pump with LS valve			LS piston pump	
Valve bank		Open center with flow sharing & flow compensators technology				
Max pump capacity	l/min	100			190	
Max working pressure	bar	250		255		
Max flow output at front auxiliary output	l/min	90		100	150	
Max flow output at rear auxiliary output	l/min	20		100	150	
BRAKING SYSTEM						
Service brake		Oil-immersed discs				
Parking and emergency brake		Passive brake with automatic actuation				
FLUID CAPACITIES						
Fuel	l	115		138		
Hydraulic	l	87		105	126	
BOOM CYCLE TIMES						
Boom raising	s	5.3		8	4.9	6.5
Boom lowering	s	4		6	4.3	5
Boom extension	s	5	6.3	7.1	4.8	5
Boom retraction	s	3.6	4.2	6.5	4.9	4.5
Crowding	s	2.5		3	2.3	2.3
Dumping	s	2.4		2.7	2.5	2

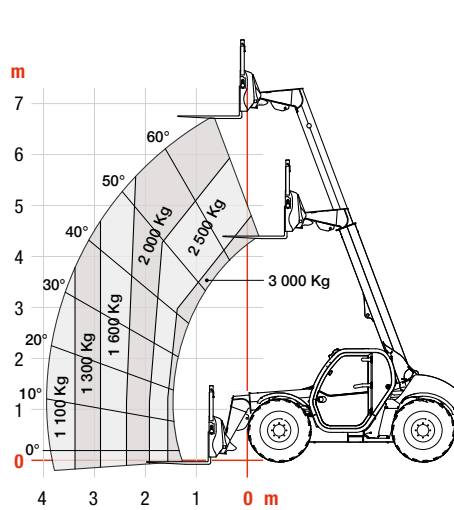
\*with roof wiper

COMPACT MODELS

TL30.60

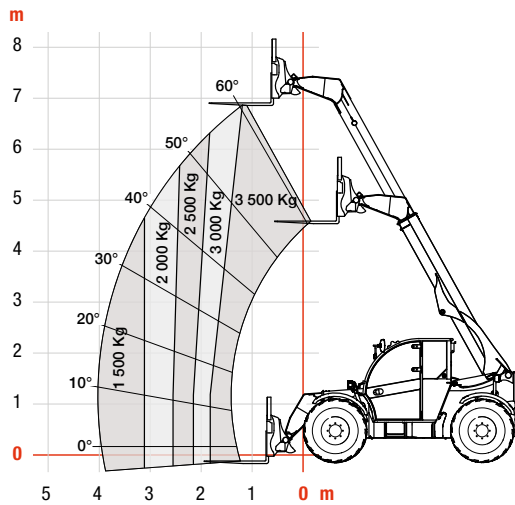


TL30.70

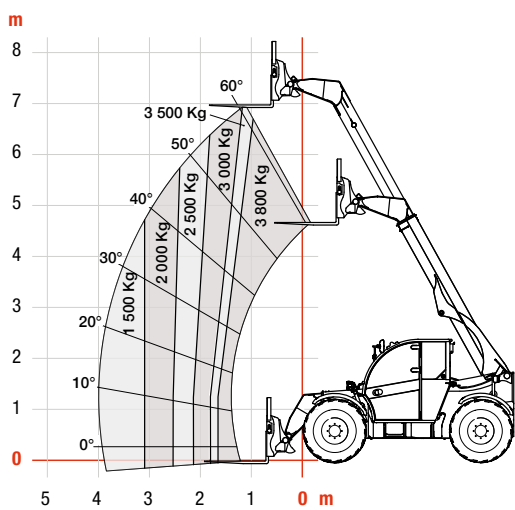


LARGE MODELS

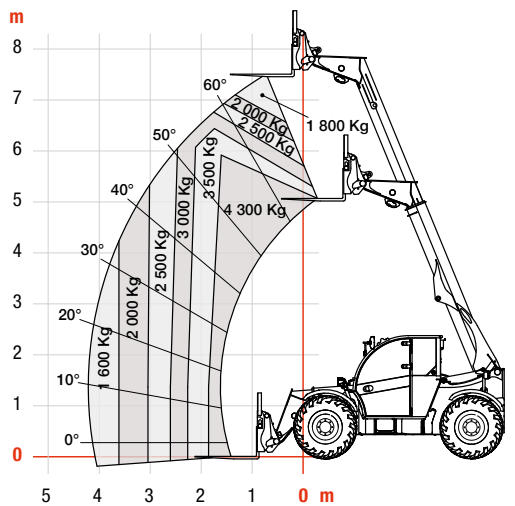
TL35.70



TL38.70HF



TL43.80HF







**340 MACHINES / 150 ATTACHMENT FAMILIES / 1 TOUGH ANIMAL**



**SKID-STEER  
LOADERS**



**COMPACT TRACK  
LOADERS**



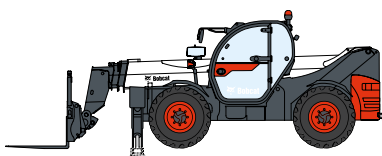
**BACKHOE  
LOADERS**



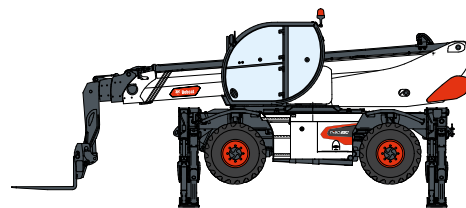
**COMPACT  
EXCAVATORS**



**FORKLIFTS**



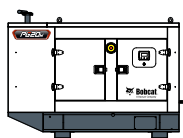
**TELEHANDLERS**



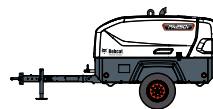
**ROTARY TELEHANDLERS**



**WAREHOUSE  
EQUIPMENT**



**GENERATORS**



**AIR  
COMPRESSORS**



**LIGHTING  
SYSTEMS**



**SMALL ARTICULATED  
LOADERS**



**MINI TRACK  
LOADER**



**LIGHT COMPACTION  
EQUIPMENT**



**ATTACHMENTS**

**DOOSAN**

**Bobcat is a Doosan Company.** Doosan is a global leader in construction equipment, power & water solutions, engines, and engineering proudly serving customers and communities for more than a century. | Bobcat and the Bobcat logo are registered trademarks of Bobcat Company in the United States and various other countries. ©2025 Bobcat Company. All Rights Reserved.

[www.bobcat.com](http://www.bobcat.com)

©2025 BOBCAT B4502371-EN (03-25)



**Bobcat**

Doosan Bobcat EMEA, U Kodetky 1810, 263 12 Dobříš, Czech Republic